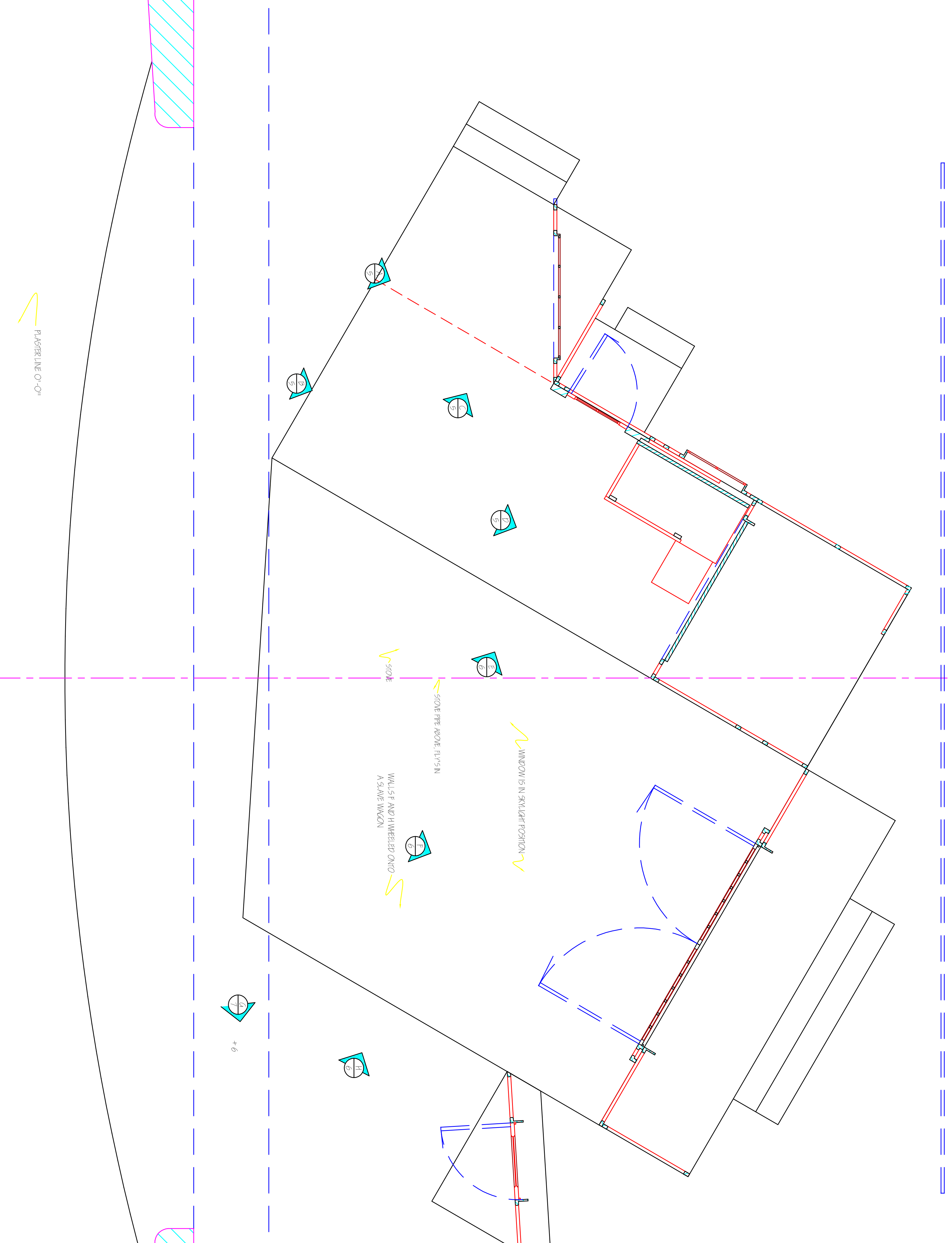


- DROP AND ROOF PROFILE 33
- CAFE DROP - ACT II 34
- 5TH ELECTRIC 35
- ORCHESTRA SHELL 32
- 31
- 30
- 29
- 28
- 27
- 4TH ELECTRIC 26
- 25
- ORCHESTRA SHELL 24
- US "POWER LINES" 23
- STOVE PIPE 21
- 3RD ELECTRIC 20
- MERGED TO #20 TO PREVENT UPSTAKE 19
- SIGN AND POWER LINES ACT II 17
- ORCHESTRA SHELL 16
- UPSTAKE SNOW BAG 15
- 14
- 13
- 12
- 11
- 2ND ELECTRIC 10
- 9
- ORCHESTRA SHELL 8
- DOWNSTAKE SNOW BAG 7
- 6
- 5
- 4
- 3
- FRONT CURTAIN 2
- 1



LA BOHEME	
BY: PULCINI	
FOR: FLORENZA SPADE OPERA, RAPP/DIAMOND HEAVER	
SCALE: 1/2" = 1'-0"	DRAWING NO. 1 A
DATE: 11/19/07	DESIGN BY: PETER DEAN BECK
REVISION: 01/19/07	OF 9